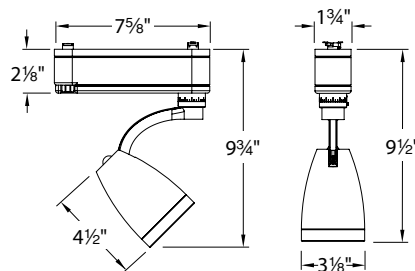


LARC – model: HID310

120V Track – ES16 Metal Halide Luminaire



Fixture Type:

Catalog Number:

Project: _____

Location: _____

PRODUCT DESCRIPTION

Metal Halide track head using ES16 lamps. Designed for use with WAC Lighting track and compatible with other manufacturer's track. (Consult factory for specific brands).

FEATURES

- 350° horizontal rotation and 90° vertical aiming with indexing scales, Spring loaded buttons lock to secure the aiming adjustment on horizontal and vertical axis
- Easily re-lamped from the front
- Utilize the second circuit on the J2 style track with the use of the JCLIP
- Accommodates up to 2 lenses and one accessory
- 5 year WAC Lighting product warranty

SPECIFICATIONS

Construction: Die-cast aluminum fixture, cap ring and check ring. Ceramic bi-pin socket. Clear 1/8" tempered glass lens included.

Ballast: Electronic. Input voltage: 120VAC/60Hz.

Lamp: ES16 metal halide, 39W (not included).

Finish: Powder coat paint. Available in Black (BK) and White (WT).

Standards: UL & CUL Listed, Patent Pending.

ORDER NUMBER

System	Model #	Watt	Finish
LTK L Track	HID310	20E 20W	BK Black
HTK H Track		39E 39W	WT White
JTK J Track			

FINISHES



- **HID310** - -

Example: LTK-HID310-39E-BK

ACCESSORIES

Color Lens	LENS-20-	AMB Amber	UV Filter	LENS-20-UVF
Dichroic Color Lens	LENS-20-DIC-	BLU Blue	Frosted Lens	LENS-20-FR
		GRN Green	Spread Lens	LENS-20-SPR
		RED Red	Beam Elongating Lens	LENS-20-BEL
		YEL Yellow	Honeycomb Louver	LENS-202-HCL
			Cross Louver	LENS-202-CRL
			Wall Washing Hood	HOOD-20-BK

WAC Lighting

www.waclighting.com
Phone (800) 526.2588 • Fax (800) 526.2585

Headquarters/Eastern Distribution Center

44 Harbor Park Drive • Port Washington, NY 11050
Phone (516) 515.5000 • Fax (516) 515.5050

Western Distribution Center

168 Brea Canyon Road • City of Industry, CA 91789
Phone (800) 526.2588 • Fax (800) 526.2585

LARC – model: HID310

120V Track – ES16 Metal Halide Luminaire

LAMP PERFORMANCE – 20W ES16

▲ 0° Aiming Angle
(ceiling to floor)

◀ 45° Aiming Angle
(ceiling to wall)

Beam: 24°

6 ft	83	2.7	2.7
9 ft	37	4.0	4.0
12 ft	21	5.3	5.3
15 ft	13	6.7	6.7

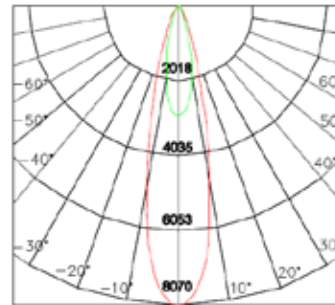
29	5.6	3.8
13	8.4	5.6
7	11.2	7.5
5	14.0	9.4

Beam: 38°

6 ft	42	4.4	4.4
9 ft	19	6.6	6.6
12 ft	11	8.7	8.7
15 ft	7	10.9	10.9

15	10.1	6.2
7	15.1	9.3
4	20.1	12.4
2	25.2	15.4

24° Beam Spread



— 20W CBCP: 2980
— 39W CBCP: 8070

LAMP PERFORMANCE – 39W ES16

▲ 0° Aiming Angle
(ceiling to floor)

◀ 45° Aiming Angle
(ceiling to wall)

Beam: 24°

Distance	FC	L	W
6 ft	224	2.6	2.6
9 ft	100	3.8	3.8
12 ft	56	5.1	5.1
15 ft	36	6.4	6.4

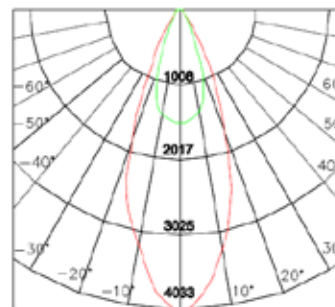
FC	L	W
79	5.3	3.6
35	8.0	5.4
20	10.7	7.2
13	13.4	9.0

Beam: 38°

6 ft	112	4.1	4.1
9 ft	50	6.2	6.2
12 ft	28	8.3	8.3
15 ft	18	10.3	10.3

40	9.4	5.8
18	14.1	8.8
10	18.8	11.7
6	23.4	14.6

38° Beam Spread



— 20W CBCP: 1512
— 39W CBCP: 4033

CBCP– Center beam candlepower

FC– Initial footcandle level at the center of the beam

L– Beam length at the point the candlepower drops off to 50% of maximum*

W– Beam width at the point the candlepower drops off to 50% of maximum*

*Measured in feet

WAC Lighting

www.waclighting.com

Phone (800) 526.2588 • Fax (800) 526.2585

Headquarters/Eastern Distribution Center

44 Harbor Park Drive • Port Washington, NY 11050

Phone (516) 515.5000 • Fax (516) 515.5050

Western Distribution Center

168 Brea Canyon Road • City of Industry, CA 91789

Phone (800) 526.2588 • Fax (800) 526.2585