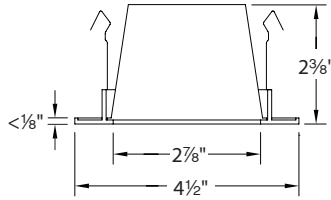
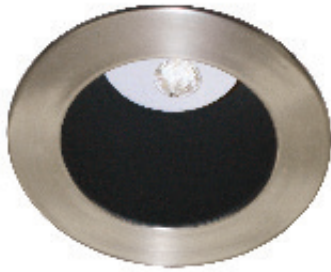


HR-LED311

3" LEDme® Open Reflector Downlight Trim

WAC LIGHTING

Responsible Lighting®



Fixture Type:

Catalog Number:

Project:

Location:

PRODUCT DESCRIPTION

Round recessed trim with interior open reflector.
For use with HR-LED309 series housings.

FEATURES

- Less than 1/8" thick, super low profile die-cast aluminum trim
- Recessed depth from LEDs to trim edge is 2 3/8"
- Narrow flood beam spread
- 100,000 hour rated life
- Deep regression produces a very low glare with 40° cut-off angle
- Handles surfaces up to 3/4" thick
- 5 year WAC Lighting product warranty

SPECIFICATIONS

Construction: Durable die-cast aluminum construction.
Three heavy gauge retention clips hold trim firmly to housing.

Light Source: Utilizes three 3W LED's (included with housing).
See individual housing for wattage rating.

Finish: Powder coat paint or plated metal finish.
Available in Black baffle w/Brushed Nickel trim (BK/BN)
and White baffle w/White trim (WT/WT).

Standards: UL & CUL Listed for damp locations.

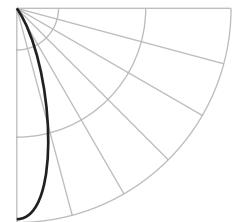
ORDER NUMBER

Model #	Finish	Reflector/Trim
HR-LED311	BK/BN	Black/Brushed Nickel
	WT/WT	White/White

FINISHES



PHOTOMETRY



Beam Angle: 32°

HR-LED311 -

Example: HR-LED311-BK/BN

COMPATIBLE HOUSINGS (ORDER SEPARATELY)

Rating	Model #	Installation	Color Temp	Watt	Lumens	CRI	Input	Current	Dimensions	Cutout
IC-Rated	HR-LED309-NIC	New Construction	27 2700K	5.8W	295	85	120V 50/60Hz	450mA	L: 15-24 1/2" W: 6 3/4" H: 5 1/8"	3 7/8"
			30 3000K		295	85				
	HR-LED309-RIC	Remodel	35 3500K		314	80				
			40 4000K		375	75				
Non-IC	HR-LED309-N	New Construction	27 2700K	8W	413	85	120V 50/60Hz	700mA	L: 15-24 1/2" W: 6 3/4" H: 5 1/8"	3 7/8"
			30 3000K		413	85				
	HR-LED309-R	Remodel	35 3500K		440	80				
			40 4000K		515	75				

Example: HR-LED309-NIC-27

See individual housing spec sheets for complete information.

WAC Lighting

www.waclighting.com

Phone (800) 526.2588 • Fax (800) 526.2585

Headquarters/Eastern Distribution Center

44 Harbor Park Drive • Port Washington, NY 11050

Phone (516) 515.5000 • Fax (516) 515.5050

Western Distribution Center

1750 Archibald Avenue • Ontario, CA 91760

Phone (800) 526.2588 • Fax (800) 526.2585