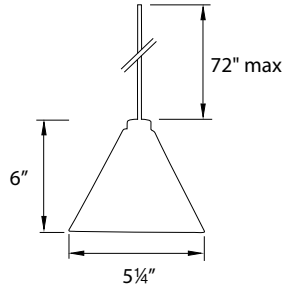


**TIKAL** - glass model: G915  
Quick Connect™ Pendant Wall Sconce

**WAC LIGHTING**  
Responsible Lighting®



Fixture Type:

Catalog Number:

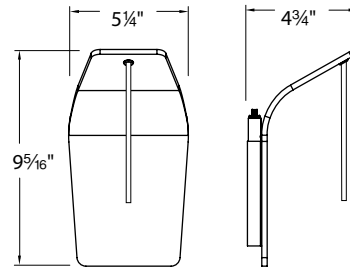
Project:

Location:

**PRODUCT DESCRIPTION**

Enhance a modern or transitional setting with lovely frosted glass pendants designed with Mayan lines in Germany.

Shades are configurable with three sconce finish options available in Chrome, Brushed Nickel & Rubbed Bronze. Choose shade color, lamping and sconce finish. All Bi-Pin socket sets can accept an LED Bi-Pin (**JCLELED-2-30-WT** - order separately). Sconce comes with an electronic transformer and is available with LED lamping.



**Model:** **WS72LED**  
**Lamping:** 12V LED Bi-Pin  
**Power:** 2W  
**Lumens:** 110  
**Color Temp:** 3000K  
**CRI:** 85  
**Dim:** 100% - 10%

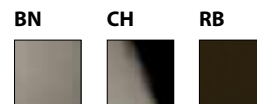
**WS72**  
12V Halogen Socket Set  
50W max

Compatible with all Quick Connect™ Pendants under 6" in diameter

**ORDER NUMBER**

Sconce Model	Lamping	Shade Model	Shade Color	Sconce Finish
<b>WS72LED</b>	12V LED	<b>G915</b> Tikal	<b>CF</b> Clear Frosted	<b>BN</b> Brushed Nickel
<b>WS72</b>	12V Halogen Bi-Pin			<b>CH</b> Chrome
				<b>RB</b> Rubbed Bronze

**SCONCE FINISHES**



- **G915** **CF** /

Example: **WS72LED-G915CF/CH**

WAC Lighting  
www.waclighting.com  
Phone (800) 526.2588 • Fax (800) 526.2585

Headquarters/Eastern Distribution Center  
44 Harbor Park Drive • Port Washington, NY 11050  
Phone (516) 515.5000 • Fax (516) 515.5050

Western Distribution Center  
1750 Archibald Avenue • Ontario, CA 91760  
Phone (800) 526.2588 • Fax (800) 526.2585