

# INSTALLATION INSTRUCTION

## Clarity - Quick Connect® Pendant

QP-LED916

# WAC LIGHTING

Responsible Lighting®

### INSTRUCTIONS PERTAINING TO A RISK OF FIRE, OR INJURY LIGHTED LAMP IS HOT!

WARNING- To reduce the risk of FIRE OR INJURY:

- Turn off all power and allow to cool before replacing lamp.
- Lamp gets HOT quickly! Contact only switch/plug when turning on.
- Do not touch lens, guard, or enclosure.
- Keep away from materials that may burn.
- Do not touch the lamp at any time. Use a soft cloth. Oil from skin may damage lamp.
- Do not operate the luminaire with a missing lens or damaged shield.
- Save these instructions.

### Overview:

Pendant sockets sets are designed for use with all WAC quick connect adapters. They may also be used on other manufacturers brand of quick connect (consult factory for compatibility). Pendants may be mounted to Solorail, monopoints, or line volt track, by coupling to a low voltage Quick Connect® adapter. Sockets are supplied with a 6" cable and may be field cut to desired length.

### Installing Lamp & Shade: (FIG.1)

1. Insert the lamp into the fixture by aligning the pins with the socket holes, and gently pushing until lamp seats.
2. Use 12V 50W bi-pin Halogen lamp with G6.35 base (supplied) with 12V 50-watt Halogen (24V lamp may be used depending on power supply).
3. Position shade so that threads go through the hole in the shade and screw on Bulb Shield from below. (See diagram).

### Installing Pendant to Quick Connect:

1. Insert the post of the quick connect into the quick connect adapter. (FIG.2)
2. Thread the top half of the conical section until it seats with the adapter.
3. Adjust fixture position, use caution not to loosen the conical section.

See reverse for field shortening pendants.

FIG.1

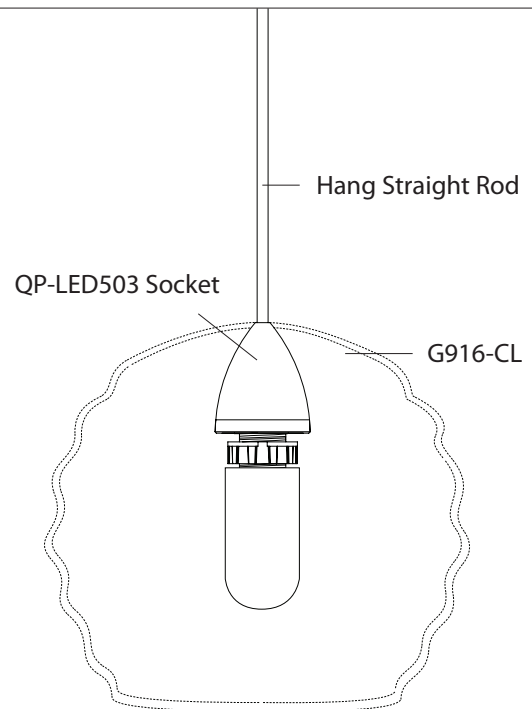
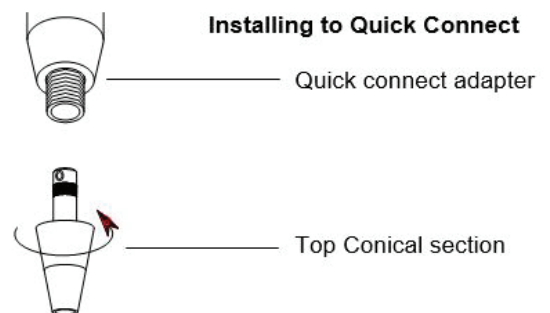


FIG.2



waclighting.com  
Phone (800) 526.2588  
Fax (800) 526.2585

Headquarters/Eastern Distribution Center  
44 Harbor Park Drive  
Port Washington, NY 11050

Central Distribution Center  
1600 Distribution Ct  
Lithia Springs, GA 30122

Western Distribution Center  
1750 Archibald Avenue  
Ontario, CA 91760

INSTALLATION INSTRUCTION  
**Clarity - Quick Connect® Pendant**  
QP-LED916

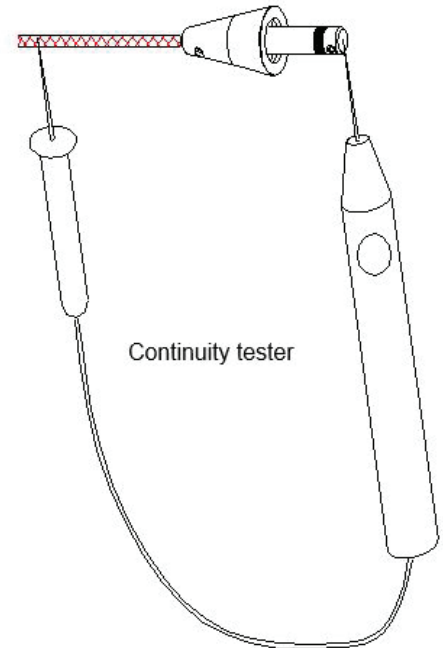
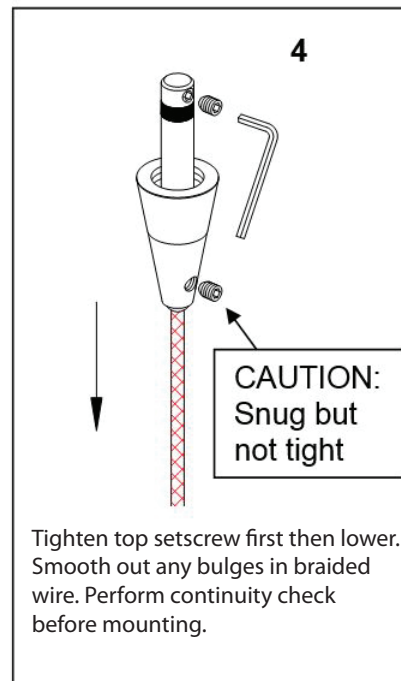
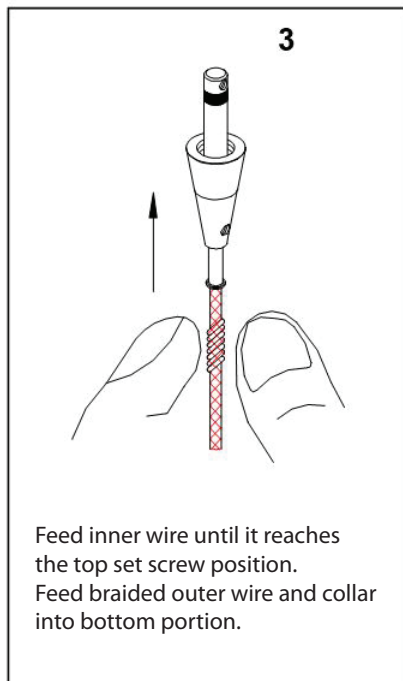
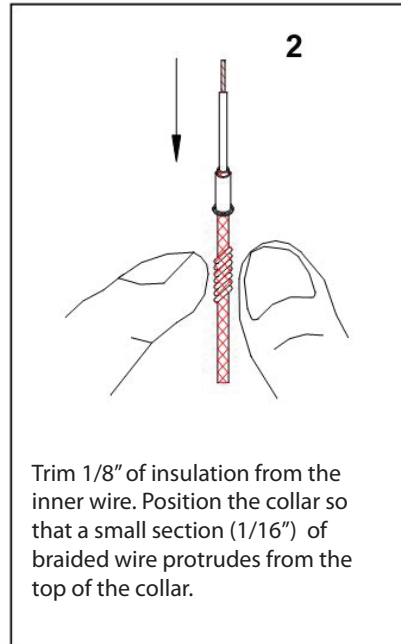
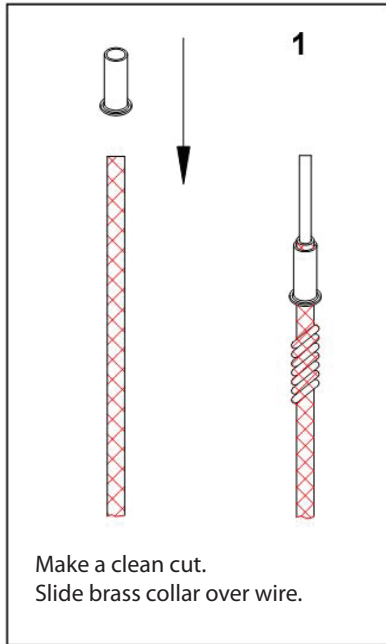
WAC LIGHTING  
Responsible Lighting®

**TO INSTALL / SHORTEN THE CABLE:**

All Pendant shades use the quick connect adapter to attach to the rail. On the QP-601 the mating piece (top conical section) for quick connect adapter comes uninstalled. Feed the cable end through the glass shade and the metal finial. If cable needs to be shortened, make the cut now.

To install the top conical section, follow the step-by-step instructions below.

**NOTE: PENDANT CABLES ARE CO-AXIAL, IF THE LOWER SCREW IN STEP 4 IS MADE TOO TIGHT, THE INNER AN OUTER WIRE WILL SHORT. A SHORT CIRCUIT WILL RENDER THE ENTIRE SYSTEM IN-OPERATIVE AND POSSIBLY DAMAGE THE TRANSFORMER. CHECK ALL PENDANT SPLICES FOR CONTINUITY BEFORE INSTALLING.**



**CHECK SPLICE:**

Before mounting, with lamp removed from the socket, check for continuity. There should be none.

Insert lamp in socket and re-check. There should now be continuity, indicating a completed circuit.

Install with power off.

waclighting.com  
Phone (800) 526.2588  
Fax (800) 526.2585

Headquarters/Eastern Distribution Center  
44 Harbor Park Drive  
Port Washington, NY 11050

Central Distribution Center  
1600 Distribution Ct  
Lithia Springs, GA 30122

Western Distribution Center  
1750 Archibald Avenue  
Ontario, CA 91760