

INSTALLATION INSTRUCTION

900 Series Quick Connect™ Socket Set

QP-902

WAC LIGHTING
Responsible Lighting®

INSTRUCTIONS PERTAINING TO A RISK OF FIRE, OR INJURY

Lighted lamp is HOT!

SAFETY INSTRUCTION

To reduce the risk of FIRE OR INJURY:

- Turn off all power and allow to cool before replacing lamp.
- Lamp gets HOT quickly! Contact only switch/plug when turning on.
- Do not touch lens, guard, or enclosure.
- Keep away from materials that may burn.
- Do not touch the lamp at any time. Use a soft cloth. Oil from skin may damage lamp.
- Do not operate the luminaire with a missing lens or damaged shield.
- Save these instructions.

OVERVIEW

Pendant socket sets are designed for use with all WAC Quick Connect™ adapters. They may also be used on other manufacturers brand of quick connect (consult factory for compatibility). Pendants may be mounted to monorail, monopoints, line volt flexible track or standard line volt track, by coupling to a low voltage quick connect adapter. Sockets are supplied with a 6" cable and may be field cut to desired length.

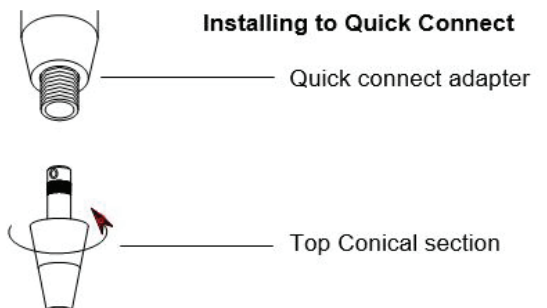
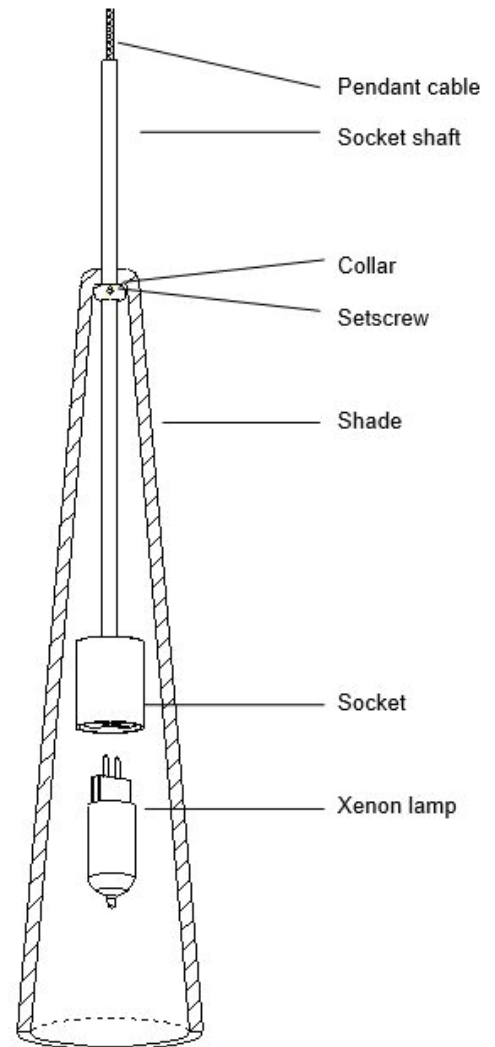
INSTALLING LAMP & SHADE:

1. Insert lamp 12V 50W max. bi-pin Xenon,
2. (not tungsten halogen) into the socket (supplied with 12V, a 24 volt lamp may also be used with appropriate power supply).
3. Remove the quick connector adapter (see shortening pendant).
4. The small collar travels any where along the length of the socket shaft and is secured by a setscrew. This allows varying lamp positions inside the shade. Set the collar to a desired height.
5. Lower the shade until it rests on the finial.
6. Re-install the quick connect adapter. If shortening the pendant do this before re installing (see shortening pendant).

INSTALLING PENDANT TO QUICK CONNECT:

1. Insert the post of the quick connect into the quick connect adapter.
2. Thread the top half of the conical section until it seats with the adapter.
3. Adjust fixture position, use caution not to loosen the conical section.

See p.2 for field shortening pendants.



WAC Lighting
www.waclighting.com
Phone (800) 526.2588 • Fax (800) 526.2585

Headquarters/Eastern Distribution Center
44 Harbor Park Drive • Port Washington, NY 11050
Phone (516) 515.5000 • Fax (516) 515.5050

Western Distribution Center
1750 Archibald Ave • Ontario, CA 91761
Phone (800) 526.2588 • Fax (800) 526.2585

INSTALLATION INSTRUCTION

900 Series Quick Connect™ Socket Set

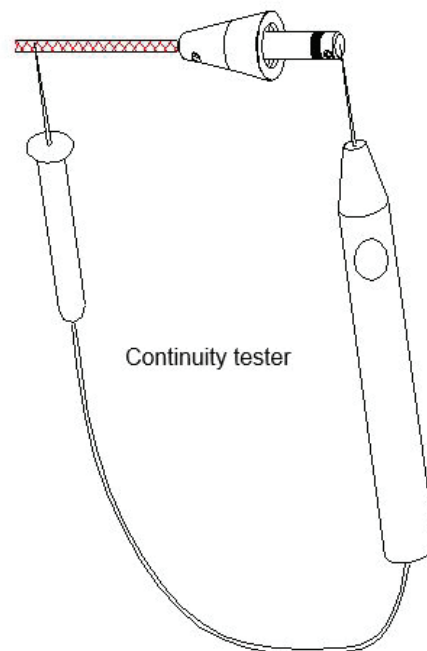
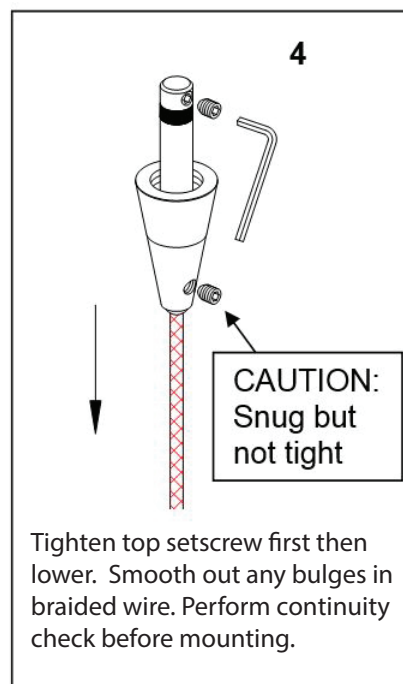
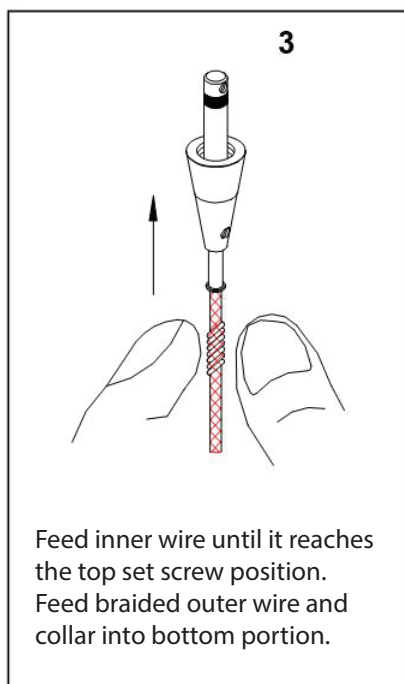
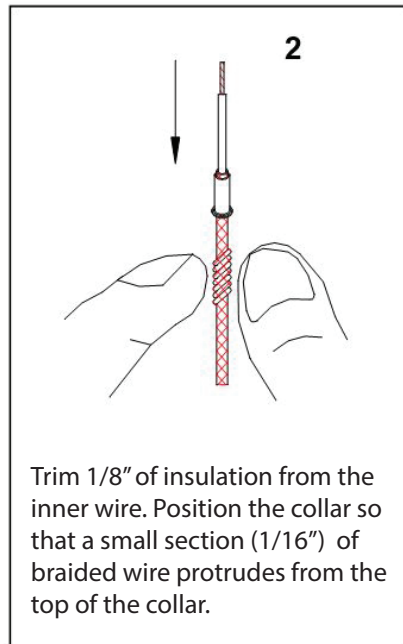
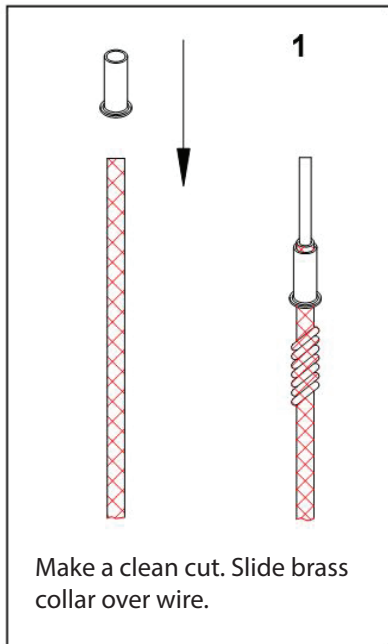
QP-902

WAC LIGHTING

Responsible Lighting®

TO INSTALL/ SHORTEN PENDANT:

All Pendant shades use the quick connect adapter to attach to the rail. On the QP-902 the mating piece (top conical section) for quick connect adapter comes uninstalled. Feed the cable end through the glass shade and the metal finial. If cable needs to be shortened, make the cut now. To install the top conical section, follow the step-by-step instructions below. **NOTE: PENDANT CABLES ARE CO-AXIAL, IF THE LOWER SCREW IN STEP 4 IS MADE TOO TIGHT, THE INNER AN OUTER WIRE WILL SHORT. A SHORT CIRCUIT WILL RENDER THE ENTIRE SYSTEM IN-OPERATIVE AND POSSIBLY DAMAGE THE TRANSFORMER. CHECK ALL PENDANT SPLICES FOR CONTINUITY BEFORE INSTALLING.**



CHECK SPLICE:

Before mounting, with lamp removed from the socket, check for continuity. There should be none.

Insert lamp in socket and re-check. There should now be continuity, indicating a completed circuit.

Install with power off.

WAC Lighting
www.waclighting.com
Phone (800) 526.2588 • Fax (800) 526.2585

Headquarters/Eastern Distribution Center
44 Harbor Park Drive • Port Washington, NY 11050
Phone (516) 515.5000 • Fax (516) 515.5050

Western Distribution Center
1750 Archibald Ave • Ontario, CA 91761
Phone (800) 526.2588 • Fax (800) 526.2585